

PINTLALA HISTORICAL ASSOCIATION

Next Meeting:
July 15, 2018 - 2:30 p.m.



*c/o Pintlala Public Library
 255 Federal Road
 Hope Hull, Alabama 36043*

Volume XXXII, Number 3

www.pintlalahistoricalassociation.com

July 2018



Young People Gather on Cotton Bales (possibly at Crenshaw's Gin, Pintlala, Alabama), date unknown, Top Row, L to R: Hattie Norman, Myrta Florence Henry, Sarah Elizabeth (Tweet) Garrett, Middle Row: Unknown Female, Bottom Row, L to R: Boots Norman and Hartley Norman; Photo courtesy Ricky McLaney

2018 OFFICERS

President Gary Burton(334)288-7414
 Vice President &
 Program Chairperson Alice T. Carter
 (334)281-3708
 Secretary Karon Bailey(334)281-6239
 Treasurer Ina Slade(334)284-0337
 Parliamentarian Jack Hornady(334)396-2130
 Members at Large
 Place 1 Patsy Davis.....(334)220-7004
 Place 2 Daisy Anne Brady.(334)398-0636
 Place 3 Brad Collins(334)734-2657
 Place 4 Alan Davis(334)270-8657
 Newsletter Designer Angelique Pugh

TABLE OF CONTENTS

President's Message Page 2
 2018 July Program..... Page 2
 "Eat Well with Bill Cordell" Page 3
 Scanned Images Montgomery County
 Business Directory Page 5
 Those Marble Tablets In
 Montgomery's Public Library Page 14

PRESIDENT'S MESSAGE

I am convinced more than ever that the great reservoir of unexplored history is at the local level. Local communities provide a treasure trove of historical information awaiting research and public exposure. The Pintlala community and southwest Montgomery County are illustrative of my premise. Nothing creates a sense of place like knowing its basic history. If we try thinking a little deeper about the community in which we live, we often find that doors of understanding swing open for us. If you wish to get started, try this twofold approach:

1. Check out the PHA website. Explore past editions of our newsletter.
www.pintlalahistoricalassociation.com
2. Attend the next quarterly meeting of the PHA. Location: Fellowship Hall of Pintlala Baptist Church, July 15. 2:30 pm.

In reference to the next meeting, Alice Carter has done it again. She has landed a rock star in the area of Alabama heritage. Don't miss Joey Brackner. Check out Alice's information about Joey in this edition.

Also, thanks to all who have renewed membership in the PHA. Membership is such a small financial investment, but our mission and purpose are strengthened when wonderful people stand with us.

We are approaching the Bicentennial year for the State of Alabama (2019). Don't miss the many opportunities to learn more about the celebrations. Check out alabama200.org.

Gary Burton, President

Garyburton1@charter.net

PHA July Program

Pintlala Historical Association will meet on Sunday, July 15th at 2:30 p.m. at Pintlala Baptist Church Fellowship Hall. Our program will be presented by Joey Brackner, manager of the Alabama State Council on the Arts Folklife Program and is Director of the Alabama Center for Traditional Culture. Brackner's topic will be Historic Pottery in Montgomery County. He will include discussion of early potter, Moses Rushton, who worked in the Grady area of Montgomery County.

Brackner is host of one of my favorite television programs, Journey Proud, seen on Alabama Public Television. Brackner takes viewers all over Alabama highlighting interesting and unique people, customs and traditions of our state.

Please join us for an interesting program!



Joey Brackner

from <http://journeyproudalabama.com/>

Welcome New Member

James Charles Chamliès
4054 Butler Mill Rd.
Lapine, AL 36046

Families of interest: Tucker, Cromartie, Hendry, Duke and Champion

“Eat Well with Bill Cordell”

by Alice Carter

Montgomery writer and artist Tom Conner wrote a column “Remember When...?” for the Sunday’s *Montgomery Advertiser* and *Alabama Journal* for 20 years. In 1989 many of his popular articles were compiled into a book of “*Remember When...?*” by the newspapers.

One of his published nostalgic memories centered around Pintlala resident Bill Cordell, (1915-1990). Cordell and his family, including his wife Elsie and children: Bill, Kathy, Judy, Bob, Jan and Jack moved to Pintlala in 1964.

In the 1940s and 50s there were not numerous fried chicken restaurants in Montgomery as there are today. Ed Bourne opened The Kottage restaurant on Mt. Meigs Road in 1946 and it was quite popular. Bill Cordell was the head cook. Bill’s son Bob is not sure where Bill learned to cook, perhaps in the 1940s in New York prior to World War II. Three years after beginning his work at The Kottage, Bill bought the restaurant from Ed Bourne. Cordell came up with his own advertising jingle—“Eat Well with Bill Cordell”.

He ultimately opened four different Cordell restaurants in Montgomery. Their locations were: The Kottage on Mt. Meigs Road; Atlanta Highway at Coliseum Boulevard; Woodley Road at the Southern By-Pass and his last site on the Mobile Highway, which was the only restaurant Cordell had built to his specifications, opened in 1964. All of the children worked at one time or another at the Mobile Highway restaurant. The restaurants on Mobile Highway and Southern By-Pass were open at the same time. Bob Cordell remembers that the Atlanta



Bill Cordell; date unknown, Photo courtesy Bob Cordell

Highway restaurant closed in either 1963 or 1964. The Mobile Highway site was closed in 1978 after the death of Elsie Cordell in 1977.

In his retirement years in Pintlala, Bill Cordell enjoyed cups of coffee and conversation at Mosley’s Store and offered advice on how to chop onions for their hot dogs! He was a loyal and dependable volunteer at the Pintlala Branch Library during its days in a portable double-wide building now used by the Pintlala Water System as an office.

Sources:

Remember When...? with Tom Conner

Published by *Montgomery Advertiser/Alabama Journal*, Montgomery, Alabama, 1989



Restaurant Association Members including on back row from left, 4th man, Bill Cordell, Photo courtesy of Bob Cordell

Bob Cordell, Pintlala, Alabama

Acknowledgements:

Thanks to Bill Cordell's son, Bob, for information and photographs.



Cordell's Restaurant, located Atlanta Highway at Coliseum Blvd., date unknown, Photo courtesy of Bob Cordell



The Kottage Restaurant, Mt. Meigs Road, date unknown, Photo courtesy of Bob Cordell

Montgomery County Business Directory.

ARCADIA.

Montgomery County.

Is only a small settlement with an estimated population of about 150, is located 31 miles south of Montgomery, the State capital and county seat, and 16 miles from Calhoun, its nearest shipping point on the Mobile & Montgomery Railroad, has one Baptist church and one school, and receives mails twice a week.

W E Bradley, P M

and genl mdse.

Enzor, H, genl mdse.

Horsey, M M, genl mdse.

Low, G, genl mdse.

McNiel, A, genl mdse.

Thrower, S S, physician.

HOPE HULL.

Montgomery County.—M & M R R.

Better known by railroad men as McGehee's station, on the Mobile & Montgomery R R, is ten miles south-west of Montgomery, the county seat, has one Baptist church and one Methodist, and two public schools; mails received twice a day; has a tributary population of some 500.

W E McGehee, P M

Felder, Adam, lawyer.

Hays, Reuben, mechanic.

McLane, Frank, physician.

Whipple, H, physician.

Windham, Andr'w

L, genl mdse.

MATHEWS.

Montgomery County.—M & E R R.

On the Montgomery & Eufaula R R, 21 miles east of Montgomery, the seat of justice, has one Methodist church, one school, one wagon shop, and enjoys express facilities; there is one grist mill and cotton gin about three miles from the station; mails received twice a day.

H A Belser, P M.

Belser, H A, Gen'l
mdse.

Belser, R J, genl mdse.

Lawson, W H, grist mill and cotton gin.

McDade, Geo W, physician.

Mathews & Tobias, genl mdse.

Wilson, John A, genl mdse.

MOUNT CARMEL.

Montgomery County.

Has a population of 150, is

Scanned Images from Montgomery City Directory, 1883-4, Regarding Rural Communities

MEERTIEF & SIMON. The Leading House for Cheap Clothing, Boots and Shoes, &c.258 *MONTGOMERY CITY DIRECTORY.*

24 miles south of Montgomery and 10 miles from Letohatchie; has three churches; M. E. South, Methodist Protestant and Baptist, and two good schools, Mount Carmel Academy and Bethlehem Academy, and also a body of I. O. G. T.; mails twice weekly by private conveyance.

James T. Giddens,
P. M.

Beale, J R Rev, teacher.
Bonham, E M, blacksmith.
Brown, John, blacksmith.
Cook, O H P Rev.
Cross, John P, carpenter.
Cross, R H, carpenter.
Davis, J G, blacksmith.
Fonville, J B, physician.

Giddens & Co, Genl
mdse.

Herling, A F, clerk.
Ingram & Co, lumber dealer.

Ingram & Giddens
saw and grist mill.

McWhorter, A B, physician.
Morrison, Geo S, justice peace.
Morrison, R C, Rev.
Norman, H H, genl mdse.
Norman, J P, Rev.
Patterson, L Rev.
Powell, Geo M, genl mdse
and grist mill.
Reynolds, physician.
Scott, W A, teacher.
Sellers & Co, grist mill and
cotton gin.
Sellers, W W, genl mdse.

MT. MEIGS.*Montgomery County.*

Is within three miles of the Western Railroad, and eighteen miles East of Montgomery; has three churches—Methodist, South, Baptist and A. M. E.—two schools—one white and one colored—has also one steam mill; enjoys a daily mail except Sunday.

R H Brewer, P M.

Armistead, D, collector.

Brewer, R H, gen'l
mdse.Burk, G T & M C, grist mill
and cotton gin.

Freeney, J G, physician.

Gilder, G C, gen'l mdse.

Judkins, L, D, gen'l mdse.

Lucas, W E, gen'l mdse.

Lynch, C M, teacher.

McDade, Jas, physician.

Nicholson, J C, physician.

Pinkston, D L, physician.

Purifoy, D, physician.

Purifoy, J L, teacher.

Wiglesmith, C, gen'l mdse.

Wiglesmith, H, gen'l mdse.

Williams, J M, physician.

Williams, R T, grist mill and
cotton gin.**OAKLEY.***Montgomery County.*

Fifteen miles south of Montgomery, and ten miles from Oak Grove, the nearest station on the the M & E R R; has one Presbyterian

OUR ENGINES, BOILERS, MILLS & PRESSES, are superior to any
in the market.

Scanned Images from Montgomery City Directory, 1883-4, Regarding Rural Communities

FOR CLOTHING. Boots and Shoes, at the Lowest Prices, go to Meertier & Simon's New Dollar Store.

MONTGOMERY CITY DIRECTORY. 259

church; one colored school, two miles from the office; one grist mill and cotton gin at the place; one within two miles, and another seven miles; mails are received by horseback twice a week.

J D Dillard, P M.

Elsberry, A F, grist mill and cotton gin.

Elsberry, J P, physician.

Ponder, —, grist mill and cotton gin.

OWLDOM.

Montgomery County.

This is a flourishing little settlement of some 250 inhabitants; twenty-one miles from Montgomery, and fifteen from Pike Road, its nearest railroad communication, on the M & E R R; contains three churches, Presbyterian, Missionary Baptist and Primitive Baptist; three schools, three grist mills and two cotton gins. This is a good agricultural section, cotton, corn and all small grains taking equal share in the products; mail daily, by horseback, except Sunday.

Jesse B Walter, P M.

Bell, W V, gen'l mdse.

Elsberry, Foster, grist mill.

Howell, W H, clerk.

Jones, W R, gen'l mdse.

Long, G G, gen'l mdse.

May, Phelan, engineer.

Robinson, E, grist mill and cotton gin.

Spear, P W, physician.

Walter Bros, grist mill and cotton gin.

Walter, J B, gen'l mdse.

Ward, Joe, miller.

PANTHER.

Montgomery County.

Is situated in a well settled section, well suited to farming interests. Corn, cotton, potatoes, oats, peas and sugar cane—all turn out a good yield to the acre. The place is 26 miles southeast of Montgomery and five miles from Mathews', its shipping point, on the M. & E. R. R, has two Methodist churches and two Missionary Baptist; two schools, Hopewell High School (white) and Jerusalem (col.); one steam grist mill and one cotton gin. Mails, semi-weekly, by horseback.

Jno W Moody, P M.

Armstrong, James, Justice of the Peace.

Baker, C C, physician.

Cutts, Wm, physician.

Davis, Abner, Rev, c.

Gray, R M, teacher.

Johnson, Andrew, Rev, c.

Littlepage, W B, teacher.

Moody, J W, gen'l mdse.

Reynolds, Charles H, clerk.

ALL MACHINERY SOLD BY FORBES LIDDELL is guaranteed to be as represented.

Scanned Images from Montgomery City Directory, 1883-4, Regarding Rural Communities

ADVANCES on Liberal Terms and Highest Market Prices for Cotton are made and paid at Meertief & Simon's New Dollar Store.

260 *MONTGOMERY CITY DIRECTORY.*

Smith, Chas H, book-keeper.
Thomas, H C, Teacher.
Wilson, Z, c, teacher.

PATTERSON.

Montgomery County.

A farmer's post office, having one church in which both the Baptist and Methodist congregations hold their services; one school; mail twice a week, by horseback. The place is situated 22½ miles southeast from Montgomery and 10 miles from its nearest shipping point on the M & E R R.

J T Patterson P M.

Alford, J A, gen'l mdse.
Benbow, J, gen'l mdse.
Downing, G L, teacher.
Lawson, Charles, gen'l mdse.

PIKE ROAD.

Montgomery County, M & M R R.

Is situated on the above road, 16 miles east of Montgomery, the seat of justice. Contains three churches, two Methodist and one Baptist; one school, Pike Road; Southern Express office; one steam grist mill and one cotton gin. Cotton and corn are the main products. Mails are received twice every day. Population about two hundred.

Eli P Gray, P M.

Belser & Parker, gen'l mdse.
Cameron, A, book-keeper.

Fitzpatrick, B, clerk.

Gray, Eli B, gen'l mdse.

Gray, W C, book-keeper.
Hudson, W M, clerk.
Logan, J J, clerk.
McDonald, N, clerk.
Mathis, T, mill.
Parker, W L, book-keeper.
Simons, A J, gen'l mdse.
Stewart, H T, clerk.
Williams, —, physician.
Wilson, John, gen'l mdse.
Wilson, W H, clerk.

PINE LEVEL.

Montgomery County.

A flourishing, go-ahead, little place of 250 inhabitants. Is situated 28½ miles southeast of Montgomery, and 16 miles from Pike Road, a station on the M & R R, and its nearest shipping point and express office; has three churches—Baptist and Methodist (white) and Methodist (col); two schools—one of these is called Pine Level Institute; one hotel, one grist mill, two blacksmith shops, three wheelwright shops, and a number of very good stores; mails received daily, by horseback, except Sunday.

Jesse H Dickson, P M.

Adams, W R, saloon.

Blackburn, M, blacksmith.

Blum, Robt, Rev, c.

Blunt, —, Rev, c.

FEED YOUR BOILERS with the HANCOCK INSPIRATORS. Forbes Liddell sells them.

Scanned Images from Montgomery City Directory, 1883-4, Regarding Rural Communities

THE LARGEST STOCK of General Merchandise can be seen
at the house of Meertief & Simon.

MONTGOMERY CITY DIRECTORY. 261

Bristow & Edwards, general
mdse.

Cook, T C, shoemaker.

Dickson, J H, gen'l
mdse.

Evan, N A, wheelwright.

Guice, S, capitalist.

Hill, R M, physician.

Hooten, S, blacksmith.

Leak, J D, machine agent.

McGehee, W T, machine agt.

McKenzie, A, wheelwright.

McKenzie, J A, blacksmith.

Nelson, C, teacher.

Nelson, J C, teacher.

Robinson, Miss, teacher.

Shaver Bros, gen'l mdse and
saloon.

Shaver, J J, mayor.

Teasley, R, mill.

Townsend, J B, physician.

Weatherspoon, L, Rev, c.

Weatherly, T J, physician.

Wright, N D, capitalist.

RAIF BRANCH.

Montgomery County.

Only a small farmer's post office, 28 miles southeast of Montgomery, which is also the nearest railroad communication; has a tributary population of 150, and one Baptist church, one good school, one steam grist mill and one cotton gin. Mails four times per week by horseback. This place has also a Masonic Lodge.

Oliver C Rushton,
P. M.

Hanes, W A, blacksmith.

Rushing, T J, grist mill and
cotton gin.

Rushton, Oliver C,
gen'l mdse.

Sellers & Bro, gen'l mdse.

Whatley, Lewis, & Co, saloon.

RAMER.

Montgomery County.

Has a population of two hundred, and is twenty-five miles southeast of Montgomery, and twenty miles from Letohatchie, the nearest station on the M & M R R; has three churches, Baptist, Methodist, Protestant and Methodist Episcopal South. Has five schools in the neighborhood, four steam grist mills and cotton gins and one steam saw mill. Mails tri-weekly, by horseback.

Wm Gunter, P M,

Carter, J M, teacher.

Dendy, T W, clerk.

Elsworth, J C, gen'l mdse.

Giddens, John A, gen'l mdse.

Graves, M, gen'l mdse.

Howell, J S, blacksmith and
wheelwright.

Jackson, B A, Rev.

McLenden, J R, teacher.

McMorris, E, teacher.

Mullens, T J, physician.

Phenix, James, broker.

Rushton, J N, gen'l mdse.

Rushton, M W, clerk.

Sampey, J S, Rev.

IN BUYING from Forbes Liddell you are dealing directly
with the Manufacturers.

Scanned Images from Montgomery City Directory, 1883-4, Regarding Rural Communities

HO, STRANGERS! Buy your Furnishing Goods at Meertief & Simon's, No. 5 Court Square.

262 MONTGOMERY CITY DIRECTORY.

Sellers, R H, physician.
 Sentell, J S, teacher.
 Skipper, J S, Rev.
 Spears, P A, physician.
 Stephens, M, Mrs, teacher.
 Stough, S C, gen'l mdse.
 Sweatt, J, c, tanner.
 Tobias, W E, blacksmith and wheelwright.
 Tucker, W H, shoe and harness maker.
 Turner, W J, harness maker.
 Turnipseed, G S, gen'l mdse.
 Walter T B & Bro, gen'l mdse.
 Walter, T B & Bro, gen'l mdse.

SNOWDOUN.

Montgomery County.

Is situated in a fine agricultural section, and, to judge from the amount of business done here, it has a fair prospect for rapid growth; is ten miles south of Montgomery and eight from McGehee's on the M & M R R. No church, one white school and one colored, one steam grist mill within a short distance, another four miles farther south, and another saw and grist

five miles. Mails semi-weekly from Montgomery and Troy by horseback.

J A Callaway, P M,
Callaway & In-
 gram, steam grist mill and cotton gin.

Davis, W J, gen'l mdse.
 Ingram, J S, miller.
 Jones, W B, justice peace.
 Joseph, Wm, steam grist mill and cotton gin.
 Lamar, H C, gen'l mdse.
 McGehee, B E, physician.
 Mason, J C, physician.
 Mason, R C, gen'l mdse.
 Ponder, steam saw and grist mill.
 Rives, Geo, physician.
 Windom, W R, gen'l mdse.

STRATA.

Montgomery County. — See also Arcadia.

Is only a small settlement of no great importance, 25 miles southeast of Montgomery, which is also its most convenient shipping point.

Geo F Moore, P M,
 Bedsole, Floyd, gen'l mdse.
 Chambers, W K, gen'l mdse.
 Stoud & Moore, gen'l mdse.

THE NEW BOSS COTTON PRESS is the only complete power press in the market.

Scanned Images from Montgomery City Directory, 1883-4, Regarding Rural Communities

BEFORE YOU LEAVE the city you want New Clothes, which are to be had at Meertief & Simon's.

MONTGOMERY CITY DIRECTORY. 263

Names of Parties in Montgomery Co. having control of 100 acres of land or more.

ARCADIA.

	<i>Acres.</i>
Athey, Wm,	660
Athey, Wm, agt,	40
Athey, & Lacy,	280
Boyd, W W,	360
Bradley, D,	220
Bradley, W E,	230
Bradley, W S,	160
Chambers, E Mrs,	240
Chambers, W K,	349
Crenshaw, H,	280
Ellison, Samuel,	290
Enzor, E A Mrs,	100
Gregory, J A,	320
Hassy, M M,	241
Knight, R L,	198
Knight, T D,	105
Russell, S S,	160
Thrower, G W,	308
Warner, B S,	560

HOPE HULL.

	<i>Acres.</i>
Ballard, J H,	80
Ballard, J H, adm'r,	160
Bibb, R J,	920
Brand, H, Mrs,	110
Flinn, Robt,	275
Flinn, W R, agent,	360
Gilchrist, J G,	834
Johnson, Wm, trustee,	698
Lamar, H C & L S,	160
McGehee, W E, agt,	1,665
McGehee, W P, agt,	1,260
Powell, G A & J L,	237

	<i>Acres.</i>
Powell, G A, agt,	110
Sayre, A S,	567
Sayre, W D,	273
Whipple, H L,	1,104

MATHEWS.

See Pike Road.

MONTGOMERY.

	<i>Acres.</i>
Abraham, J, & Bro,	1,077
Adams, J R,	480
Adams, J R, agt,	1,076
Alexander, S L,	985
Alsop, T J,	324
Anderson, Pelham J,	1,110
Asheley, F L, sr,	1,884
Baldwin, W O, Dr,	3,031
Barksdale, B L,	1,496
Behr, S, & Bro,	280
Bell, N J,	477
Bibb, B S,	4,417
Bingham, T C,	235
Brame, C E, agt,	240
Braswell, A B,	200
Bryant, J H,	652
Caffey, J A,	344
Carr, Thos H,	640
Casby, E L,	160
Chappell, James,	545
Chisholm, M A,	524
Clark, H W,	1,120

THE LEFFELL WATER WHEEL excels all. Forbes Liddell is the Montgomery Ag't.

Scanned Images from Montgomery City Directory, 1883-4, Regarding Rural Communities

MEERTIEF & SIMON. The Leading House for Cheap Clothing, Boots and Shoes, &c.266 *MONTGOMERY CITY DIRECTORY.*

	<i>Acres.</i>		<i>Acres.</i>
Sharp, R W,	356	Boyd, J T,	100
Smith, A G,	1,945	Brady, R A,	726
Snodgrass, R B,	149	Brady, Thomas,	347
Steiner, V, & Bro,	200	Brady, Thomas, agt,	120
Stewart, L A, Mrs,	665	Brady, J M,	160
Stokes, M C,	1,172	Bussey, W T,	200
Stokes, W S, trustee,	308	Chambers, James,	160
Stone, B W,	720	Cross, J P,	200
Stone, Geo W,	340	Cross, R H,	200
Stone, H L,	1,837	Dean, J D, agt,	240
Stubbs, C A,	396	Ekwurzel, O G, agt,	320
Taylor, W R,	480	Giddens, & Co,	817
Taylor, Wm, exr,	1,211	Huffman, B W, agt,	513
Thornton, R D,	160	Johnson, J W,	320
Troy, D S,	130	Lewis, B E,	280
Troy, D S, agt,	640	Lewis, W W,	290
Tyson, A P, agt,	303	Mathews, J E,	100
Vickers, Thomas, G,	642	Moore, E H, agt,	320
Vincent, Hellen Mrs,	400	Morrison, G S,	200
Walker, H T, agt,	985	Moore, Chas, agt,	360
Walters, J C,	140	Moore, John A,	160
Walters, N E H,	60	Moore, James,	360
Walters, N E H, agt,	400	Moncrief, S E, Mrs,	200
Ware, Jas A,	1,040	Norman, H H,	110
Ware, Jas, Mrs,	560	Patterson, L,	200
Ware, M E, Mrs,	400	Pool, J W T,	1,400
Washburn, B M, agt,	169	Pool, A,	476
Westcott, D B,	518	Reeks, G C, agt,	243
Westcott, S T,	256	Sellers, F J,	100
Westcott, W R,	1,855	Sellers, W J,	673
Westcott, W R, agt,	230	Sellers, W J, agt,	400
Whipple, H L,	1,114	Sellers, J H, agt,	313
Wright, Eva, Miss,	200	Sellers, A M,	1,420
Young, B C, Mrs,	520	Sharp, M J, Mrs,	640
		Skipper, E,	100
		King, T C, guar,	160
		Anderson, T J, agt,	100
		Thompson, G W,	200
		Vickers, T V A,	556
		Vickers, Lee,	100

MOUNT CARMEL.

	<i>Acres.</i>
Bonham, J W,	100
Bonham, J W, agt,	160
Boyd, Demsey,	400

OUR ENGINES, BOILERS, MILLS & PRESSES, are superior to any in the market.

Addendum

This additional material is intended to aid the reader in distinguishing locations of selected 1880 Montgomery County communities listed above.

MONTGOMERY COUNTY CENSUS 1880

Arcadia: 5 miles in South West direction from Stoddard; probably in the Crenshaw County/Montgomery County Boundary.

Oakley: Report dated February 23, 1878 shows the post office at Oakley was located in the Northeast quarter section 23, Township 14, Range 18 (1881 report states section 34)

Owldom: P.O. Named Owldom was opened on April 5, 1880. The name was changed to Woodley on July 9, 1880.

Panther: Just inside the eastern boundary of Montgomery County, west of Reynolds, Bullock County

Patterson: 22 miles to the Southeast from Montgomery.

Source:

Post Office File

Compiled by Laurie and J. J. Sanders

Pintlala Branch Library

Sources

Alabama Department of Archives and History

Collection Number 104, Alabama City Directories

Box 102, Montgomery: 1880, 1893-1899

Used Directory 1883-4 on cover of book, 1880 on paper wrapper

Montgomery County Business Directory 1883-4 within City Directory, pp. 257-262

Names of Parties in Montgomery County having Control of 100 Acres of Land or More, 1883-4 City Directory

Hope Hull: p. 263

Mt. Carmel: p. 266

THOSE MARBLE TABLETS IN MONTGOMERY'S PUBLIC LIBRARY

Gary Burton

The recent renovation of the downtown public library, the Juliette Hampton Morgan branch, was much needed and ushered in a new era of library services. Spatial changes created an openness throughout the complex, but especially on the second floor where three large marble tablets seemed to suddenly appear in full view on the south wall. In addition, two smaller panels accompanied them in 1959 when the building was new and the Montgomery Museum of Fine Arts occupied the second floor.

For many years the marble tablets have been difficult to see due to books and high shelving which obstructed their view. Today they are in plain sight. In 1988 the Museum moved to the Blount Cultural Park leaving both floors to the Montgomery City-County Public Library. Since its inception in 1930, the Montgomery Museum of Fine Arts, until 1959, had been housed in the abandoned Central High School, a one-time school for girls.

The three tall tablets memorialize the names of Confederate ancestors who were engaged in the Civil War. The marble memorials were used by the Museum as fundraisers for the Confederate Room. The Museum already had a Pioneer Room. Consequently, for a gift of money (\$5.00) and/or significant memorabilia, families would have the names of their Confederate ancestors inscribed on the marble tablets. During 1938 The Montgomery Advertiser chronicled the tremendous public response to the fundraising effort. In the same year the Confederate Room was created and work on the tablets began.

Two tablets filled up quickly because of the public response with money and artifacts. Response to the third tablet was more challenging. It is surprising to learn that the campaign which began in 1938 did not end until 1954. It may be that World War II brought the fund drive for the Confederate Room to a standstill. Mrs. Files Crenshaw, chairman of the Confederate Room committee, was 78 when she died in 1956, two years after the three tablets were completed and installed in the former Central High School. The 16-year appeal for memorabilia and money may have been difficult to re-start especially when many in the previous generation had died. The delay may have been in the production and/engraving of the marble. One can only wonder.

Five years later in 1959 all the marble panels were removed from the former Central High School, and installed in the new building with the public library occupying the first floor, having relocated from the Carnegie building which had been the library's home since 1905. Until 1988 the second floor was home to the Museum of Fine Arts where the panels can be clearly seen today.



Marble Tablets, Montgomery Public Library
Photo courtesy of Jerrie Burton



Frances Greene Nix, (American, 1907-1982), *Portrait of Mrs. Files Crenshaw*, date unknown, oil on canvas, Montgomery Museum of Fine Arts, Gift of the artist to the MMFA upon Mrs. Files Crenshaw's retirement, 1945.10

Excerpts From *Montgomery Advertiser*:

Sunday, June 12, 1938, p. 14

Confederate Collection At Museum Is Enlarged

In response to the appeal for gifts for the Confederate collection of the Montgomery Museum several interesting items have been presented. One of the most fascinating is a map of the battlefield drawn during the battle by F.F. Wise, a brave Confederate soldier. It is a rough pencil sketch showing Hampton Roads and the bay...There is a tragic telegram to Gov. Watts dated March 31, 1865: "Lieut. Col. D.S. Troy was seriously wounded yesterday and is now in the hands of the enemy."

Sunday, June 26, 1938, p. 14

Confederate Collection At Museum Is Enlarged

Mrs. Daniel Shipman Troy has placed in the Confederate Room a copy of the inaugural address of Gov. Thomas Watts, governor of Alabama during the war and a photograph of Gov. Watts. She has also added a photograph of Col. Daniel Shipman Troy and a collapsible silver cup carried by him during the war... Another welcome gift to the Confederate Room of the Museum is a splendid steel engraving of Lee's surrender to Grant. It shows both armies lined up on a plain with Lee and Grant under a tree in the foreground.

Sunday, August 14, 1938, p. 19

Confederate Collection At Museum Receives Additions

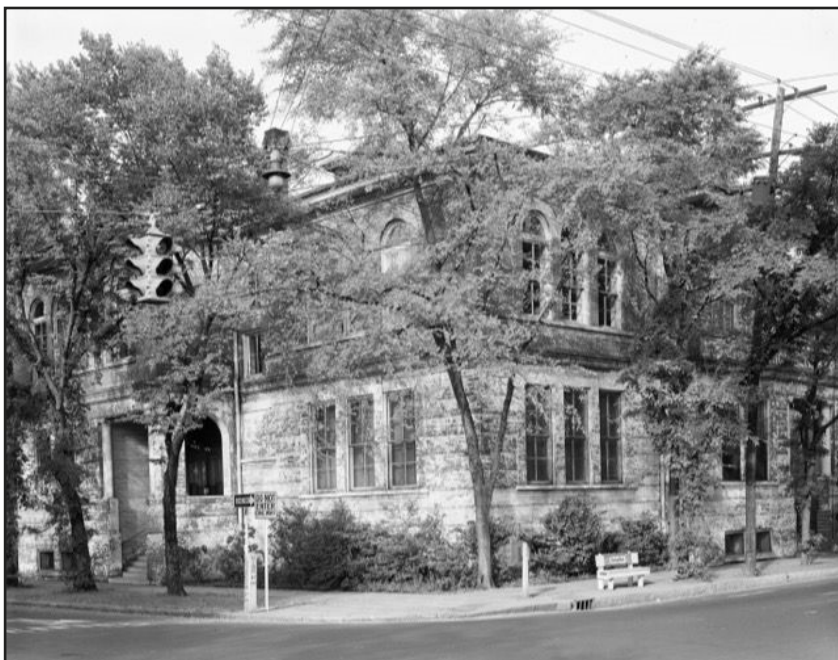
Dr. O.B. Wright has placed a copy of *The Daily Mississippian* of July 10, 1864, in the Confederate collection. The paper describes in detail the capture of Jackson by the Federal Troops...Another interesting item in Miss Barron's collection is a photograph of Jefferson Davis funeral bier at the Capitol. With it is a dried rose bud from one of the garlands made by the women of Montgomery to hang around the bier.

Tuesday, October 18, 1938, p. 5

Confederate Memorial Room To Be Featured At Museum

The Board of Directors of the Montgomery Museum voted last week at their regular meeting to proceed with plans for developing the Confederate Memorial Room at the Museum. This room will undoubtedly prove to be one of the most important and popular in the Museum. Splendid portraits of General Lee and Jefferson Davis will be the dominant features of the room. One of the most distinguished artists in America has been commissioned to do these portraits and they are now being painted in her New York studio.

The portraits will be dedicated to the memory of Confederate Soldiers and will be presented by their descendants. A beautiful bronze or marble tablet will be placed in the room and on it will be inscribed the names of these soldiers. Mrs. Files Crenshaw, chairman of the portrait fund, announces that anyone who gives five dollars or more will be allowed to place the names of a Confederate ancestor on the tablet. A number of subscriptions have already been made to honor these gallant men: Col. Daniel S. Troy by Mrs. Daniel Troy; John B. Bissell by Mrs. Charles Thigpen; Lester C. Smith and J.W.A. Jackson by Mrs. Files Crenshaw; William R. Houghton, Mitchell B. Houghton and Thomas J. Powers by Mrs. Harry S. Houghton; Gov. Thomas H. Watts by Mrs. Wiley Hill, Jr.; Gen. John Scott by Miss Mary Virginia Kohn; William S. McGhee by Mrs. Joseph Ledbetter; John Henry Cromelin by Mrs. William Nicrosi; Joseph C. Gibson and Robert S. Lanier by Mrs. B.B. Comer; Maj. Phillip Fitzpatrick by Mr. Kelly Fitzpatrick.



Central High School

Photo courtesy Alabama Department of Archives and History

Mr. Kelly Fitzpatrick has presented one of his delightful paintings to be raffled off to raise money for the furnishings and equipment for the Confederate Room. Mrs. Wiley Hill, Jr. and Mrs. William Nicrosi are in charge of the raffle and anyone wishing tickets is requested to telephone them.

Sunday, May 14, 1939, p. 16

Confederate Room Of Museum Receives Valuable Gifts

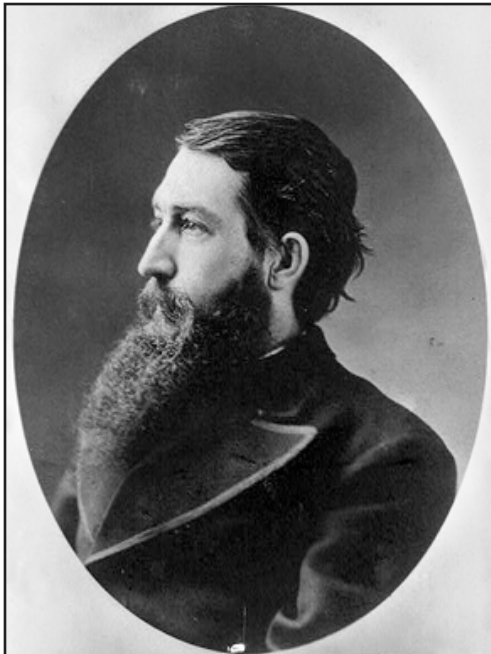
Mrs. John Tilley has presented to the Confederate Room of the Montgomery Museum of Fine Arts a bust of the beloved southern poet, musician and soldier, Sidney Lanier. The bust by Ephraim Keyser was done in Baltimore in 1880 and is the original form from which the marble bust at John Hopkins University was made....

The Montgomery Marble Works have already begun carving the names of Confederate soldiers on the first two panels of the marble tryptich but names are still being received for the third panel.

June 11, 1939, p.18

Acquisitions Listed In Museum's Confederate Room

Mrs. Crenshaw, chairman of the Confederate Memorial Tablets, announced that the first two are almost complete.



Sidney Lanier

www.encyclopediaofalabama.org/article/m-7060

June 25, 1939, p.18

Confederate Honor Roll Is An Acquisition To Museum

One of the most interesting and valuable features of the Confederate Room of the Montgomery Museum will be the Confederate Honor Roll. This is a beautiful leather bound book, especially made by the Paragon Press, in which will be inscribed biographical sketches of the men whose names are on the marble memorial tablets.

Prof. J.A. Osgoode who is noted for his beautiful and distinguished penmanship as well as for his knowledge of Confederate history is in charge of the book...

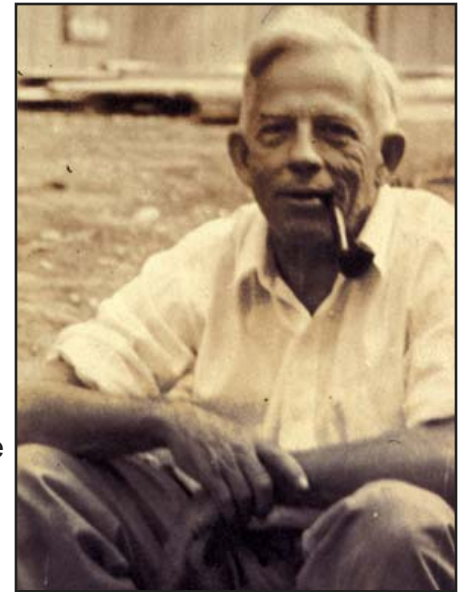
Mrs. Files Crenshaw, who is in charge of the memorial tablets, announced that a few spaces are left on the final tablet.

Sunday, July, 16, 1939, p. 15

Confederate Memorial Tablets Asset To Museum

The Memorial Tablets for the Confederate Room at the Montgomery Museum are nearing completion and they far surpass in beauty and interest the expectations of the Confederate Room committee.

The marble for these tablets has most generously been given by the Alabama Marble Company at Gantts Quarry and the Moretti Harrah Marble Corporation of Sylacauga, Alabama is known over the world for its beauty of texture, color and finish and these two companies have given the finest pieces available. Even the famous Italian quarries at Carrara have never produced more perfect pieces in tablets of this size. The pride which Southerners feel in this memorial to their Confederate ancestors can only be enhanced by the exquisite marble from Alabama quarries on which the names are carved.



Kelly Fitzpatrick

www.encyclopediaofalabama.org/article/m-2579

These tablets were designed by and carved under the direction of Pepton [Peyton] Mathis of the Montgomery Marble Works. Mr. Mathis has given generously of his time, his knowledge and experience and his perfect taste has made this marble tryptich into a real work of art.

Sunday, July 23, 1939, p.16

Museum Is Planning Formal Opening Of Confederate Room

The officials of the Montgomery Museum of the Confederate Room committee, headed by Mrs. B. B. Comer and Mrs. Files Crenshaw, are making plans for the formal opening of the Confederate Room in the early Fall. The museum will entertain at a reception in honor of descendants of the Confederate soldiers whose names are on the Memorial Tablets.

The Confederate Room is now open to the public but it has not been arranged in its final form. Many of the most impressive features have not yet been installed and new cases, lighting and decorations are being planned. The marble Memorial Tablets will, of course, be the dominant feature of the room and on either side will be hung the magnificent portraits of Gen. Robert E. Lee, presented by Mrs. Charles Thigpen, and President Jefferson Davis. Both portraits were painted by Anne Goldthwaite.

Sunday, August 20, 1939, p.17

Fine Arts Museum Receives Names For Memorial Tablets

Mrs. Files Crenshaw, in speaking of the Confederate memorial tablets at the Montgomery Museum, said that two of the panels have been installed. They are not completed as the ornamental moulding has not been placed, the surrounding woodwork has not been painted and the special lighting has not been arranged but they do give an idea of what the completed memorial will look like and what it will mean in the future to the descendants of the Confederates who have been honored...One child from an old Montgomery family was thrilled to discover the names of six ancestors and relatives on the memorial. Work has begun on the third tablet and it will be installed shortly....

Sunday, September 3, 1939, p.12

Museum's Confederate Room Nears Completion

The Confederate Room at the Montgomery Museum, even in its unfinished state, is proving one of the most popular attractions offered by the Museum. The two memorial tablets that have been placed are attracting a great deal of interest, and reading the list of names has made a tug at many a heart string.

Sunday, October 1, 1939, p.22

Confederate Room At Museum Nears Completion

In 1861 Alabama had a population of about 100,000 white people; more than 120,000 men and boys enlisted in the Confederate Army. The spirit that produced such an army still lives in their descendants as is shown by the hundreds who are interested in the Confederate Memorial Tablets in the Montgomery Museum...Names of fathers, grandfathers, uncles and even old family friends have been sent in by people as far away as California, Michigan, Ohio, and New York, and of course, all of the Southern states.

Sunday, November 19, 1939, p.19

Museum's Confederate Room Receives Acquisitions

Mrs. Frank McPherson has sent a jewel cabinet which belonged to Mrs. Clara Lee Jewett. During the War Between the States the cabinet was buried beneath the bed of the creek which flowed through the meadow in front of Mrs. Jewett's home in Jamestown, Clark County, Ala. The chest is made of Rosewood and inlaid with mother of pearl.

Sunday, December 10, 1939, p.32

Confederate Room At Museum Is Mecca For Visitors

Mrs. Sloan Cassels says of the Confederate room at the Museum of Fine Arts:

“The coming event of the Blue and Gray pageant is making all Montgomery think more and more of the honorable and heroic soldiers who fought, bled and died for the Confederacy...”

Sunday, April 21, 1940, p.24

Museum's Confederate Room Receives Valuable Gifts

Another interesting gift to the Confederate Room is the Oath of Allegiance to the Constitution of the United States, which was sworn to by John P. Mushat, of Lowndes County, on Sept. 28, 1865. Especial reference is made in the oath whereby the signer is to obey all laws and proclamations relating to the emancipation of slaves. This Oath of Allegiance is the gift of Mrs. David Marbury of Birmingham.

Sunday Morning, March 9, 1941, p.18

Acquisitions Are Listed For Museum Of Fine Arts

There have been so many inquiries about the names placed in memory of Southern heroes that the Museum has decided to add another tablet to the three already placed in the Confederate Room. This tablet will hold about seventy-five names...Anyone who is interested in having an ancestors name placed on this new tablet will please telephone Mrs. Files Crenshaw, chairman, dial 7528.

Sunday, June 22, 1941, p. 13

Confederate Room At Museum Holds Treasures

The portrait of Emma Samson [Sansom] is the first of a woman to be placed in the Confederate portrait gallery. However the names of Mrs. Carnot Bellinger, and Mrs. Sophie Bibb are carved upon the Confederate Memorial Tablets in recognition of their patriotic service and great devotion in the South.

Sunday, November 15, 1942, p.20

Fine Arts Museum Lists Recent Acquisitions

A new memorial tablet has been recently installed completing the design. There are three great arched marble tablets flanked by two smaller tablets.

Sunday, December 19, 1954, p. 49

Confederate Rosters Nearing Completion At Museum

The marble tablets in the Confederate Room at the Montgomery Museum of Fine Arts, engraved with the names of Soldiers of the Confederacy, are almost complete. This is the last call to send the names of Confederate soldiers whose families wish to have them thus immortalized. There was. Room for only 27 more names, and the first 27 received ate all that can be accepted. The cost of engraving is \$5 a name, and a telephone call to the museum will reserve a space as long as any is available. After confirmation of a reservation, the name must be brought or mailed to the museum with the fee at once, since the tablets will be engraved immediately upon completion of the roster.



Emma Sansom

www.encyclopediaofalabama.org/article/m-3770



1959 Montgomery Museum of Fine Arts, Photo courtesy of Alabama Department of Archives and History



1960s Interior of Montgomery Museum of Fine Arts, Photo courtesy of Alabama Department of Archives and History



**PINTLALA HISTORICAL
ASSOCIATION**

*c/o Pintlala Public Library
255 Federal Road
Hope Hull, AL 36043*

NEXT MEETING

JULY 15, 2018

2:30 P.M.

**PINTLALA BAPTIST
CHURCH**

Join the Pintlala Historical Association

Please mail completed form & dues to:

Pintlala Historical Association

Ina Slade

Name _____

Address _____

City, State Zip _____

Phone (Home & Office) _____

E-Mail Address _____

Areas of Interest _____

If you are interested in genealogy, please indicate family surnames _____

\$15.00 Annual Dues